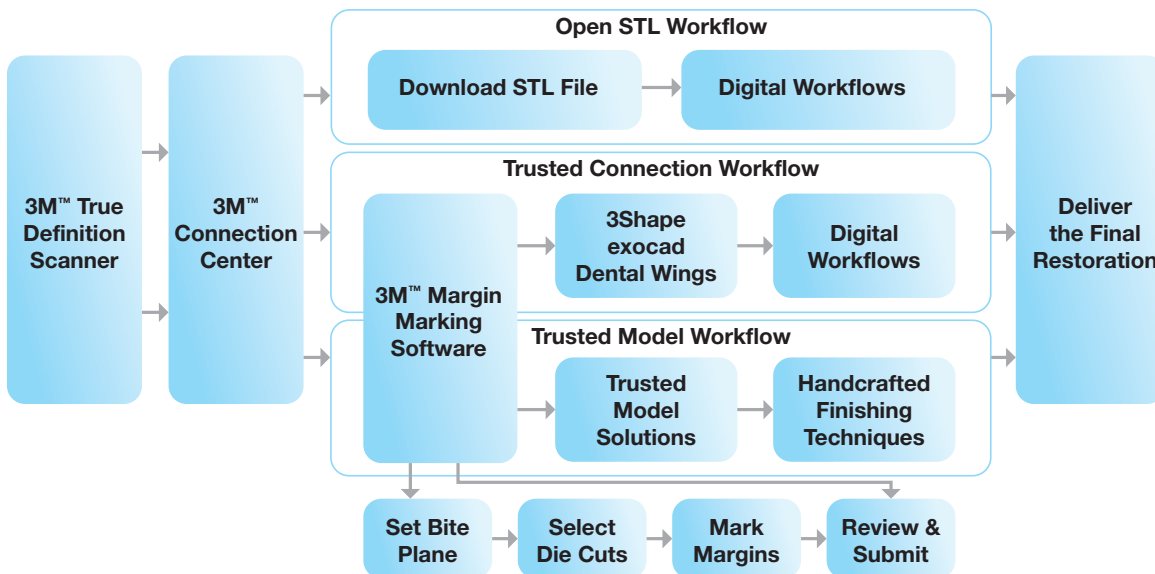


# Your Dental Lab and the 3M™ True Definition Scanner



Your dental laboratory is your first Trusted Connection. You can easily and securely send digital impression files to your lab through the 3M™ Connection Center. If your lab has not worked with 3M™ True Definition Scanner files, 3M will work with them to assist in the transition. Affordable, subscription-based Lab Packages give labs access to the 3M™ Connection Center and the digital impression files they need.



# How does it work?

---



## 1. Scan

Doctors scan using the 3M™ True Definition Scanner to create a true 3D replica of the oral anatomy. The accuracy of the 3M™ True Definition Scanner provides a solid foundation for your lab to create high quality, precisely fitting restorations

---



## 2. Transmit and Store

Cases are sent directly from the scanner to the 3M™ Connection Center – a secure digital hub that stores, sends and converts the digital impression files.

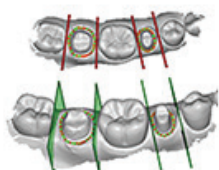
---



## 3. CAD/CAM Workflows

Labs have the option of downloading an open STL file directly from the 3M™ Connection Center for use in a variety of open CAD/CAM systems. Labs can also use these files for all-digital, model-free restorations.

---



## 4. Mark Margins and Prepare Models

Labs also have the option of utilizing 3M™ Margin Marking Software to mark margins and prepare full arch or quadrant working models for printing.

---



## 5. Trusted Model Solutions

Once marked and prepared, the high precision SLA working models are printed and delivered to your lab for any additional finishing work.

---



## 6. Handcrafted Finishing Techniques

After receiving the printed SLA models, the lab can apply the appropriate handcrafted finishing techniques to create the strength and esthetics that are clinically appropriate for each case.

---



## 7. Seat and Cement

Upon completion of the final restoration, through CAD/CAM or traditional techniques, the final restoration can be delivered for seating and cementation.

---



3M ESPE Dental  
2510 Conway Avenue  
St. Paul, MN 55144-1000 USA

Phone 1-800-634-2249  
Web [3m.com/truedef](http://3m.com/truedef)

Please recycle. Printed in USA © 3M 2015.  
All rights reserved. 3M and ESPE are  
trademarks of 3M or 3M Deutschland GmbH.  
Used under license in Canada.